

35th Social Studies Teachers Workshop

Opening

8:30 a.m.

Al Wheat

The Mississippi Department of Archives and History was founded in 1902.

*collects, preserves, and provides access to the archival resources of the state

*administers museums and historic sites

*oversees statewide programs for historic preservation, government records management, and publications



William F. Winter Archives and History Building
200 North Street
Jackson, MS 39201

35th Social Studies Teachers Workshop

Digital Education Resources

Stephanie King

Shira Muroff

Itinerary

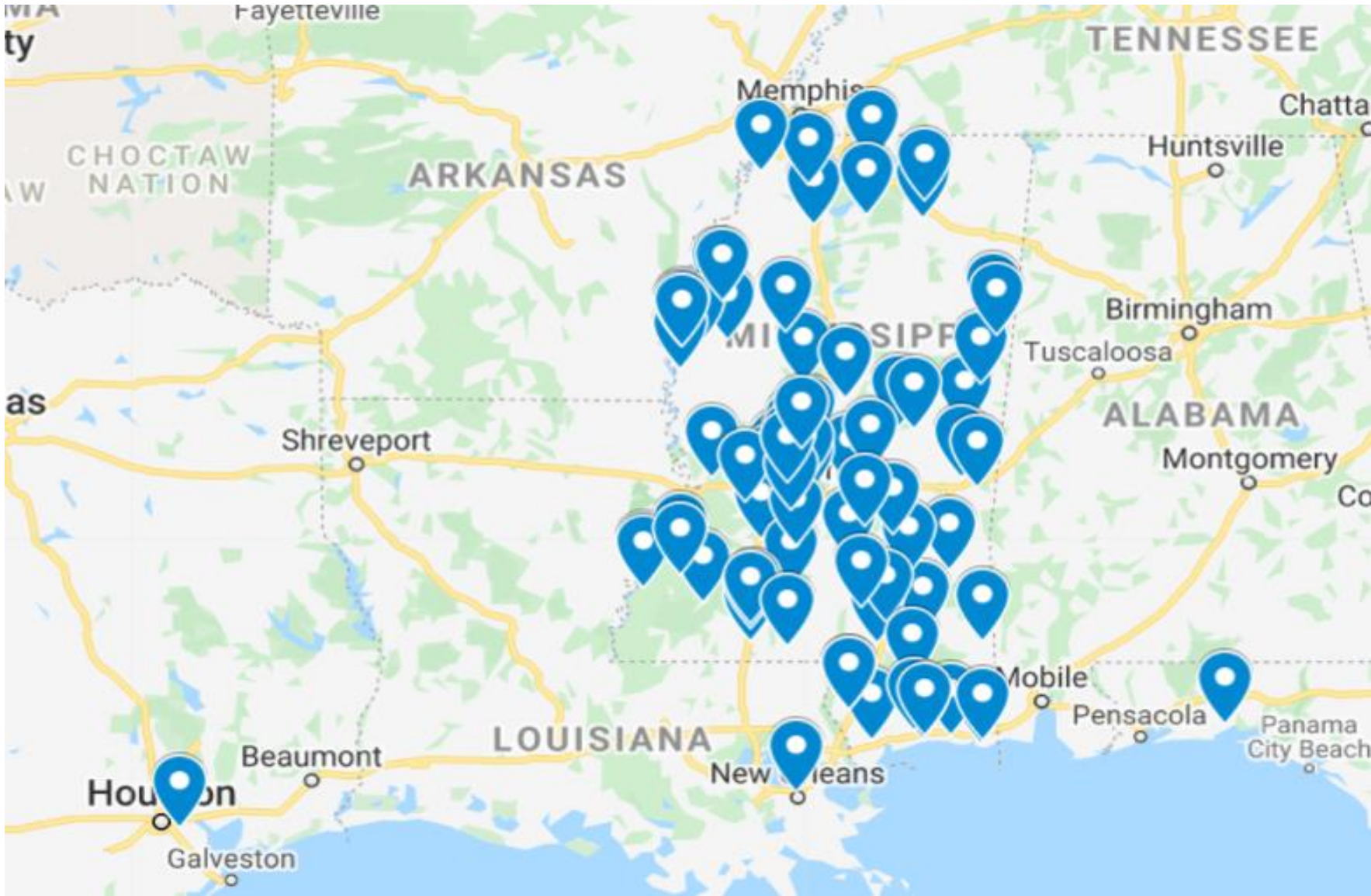
Welcome and Introductions

Community Building Activity

MDAH Digital Resources

Breakout Session - Lagniappes

Debrief/Comments



MDAH Sites



Jackson, MS

MDAH Sites



Natchez, MS



Greenville, MS

Digital Resources for Teachers & Students

MDAH
MISSISSIPPI DEPARTMENT OF
ARCHIVES & HISTORY

[YouTube](#) [Facebook](#) [Twitter](#) [Instagram](#) 601-576-6850 [News](#) [Genealogy](#) [Contact](#) [Donate](#)

[RESEARCH](#) [COLLECTIONS](#) [EXPLORE MISSISSIPPI](#) [HISTORIC PRESERVATION](#) [EVENTS](#) [TEACHERS & STUDENTS](#) [GOVERNMENT RECORDS](#) [CAREERS & VOLUNTEERING](#) [ABOUT MDAH](#)

Teachers & Students





Traveling Trunks

Distance Learning

Scenes from Mississippi History



MDAH MDAHVideo
252 subscribers

SUBSCRIBED

HOME VIDEOS PLAYLISTS CHANNELS DISCUSSION ABOUT

Created playlists SORT BY

- History Is Lunch
Updated today
VIEW FULL PLAYLIST
- Eudora Welby House & Garden
VIEW FULL PLAYLIST
- Commission to Redesign the Mississippi State Flag
VIEW FULL PLAYLIST
- 50 Years and Forward: The Voting Rights Act in Mississippi
VIEW FULL PLAYLIST
- Scenes from Mississippi History
VIEW FULL PLAYLIST
- Two Mississippi Museums—Museum of Mississippi History—
VIEW FULL PLAYLIST

Virtual Field Trips

Two Mississippi Museums Virtual Field Trips

Aligned to Mississippi College and Career Readiness Standards for Social Studies, Two Mississippi Museums' virtual field trips will feature skills and concepts covered in grades 4–12. Staff will lead students through museum galleries focusing on one of the topics listed below. The thirty minute participatory lessons will highlight and discuss stories, primary documents, and artifacts from the galleries, followed by a question and answer period.

Topics

- + First Peoples
- + Journey to Statehood
- + Cotton Kingdom and Slavery
- + Reconstruction
- + Mississippians in WWII
- + Separate is not Equal: School Segregation
- + Freedom Rides with Mississippi Civil Rights Veteran Hezekiah Watkins
- + Freedom Summer 1964
- + Veterans of the Mississippi Civil Rights Movement: Who are you?



Mississippi History Day 2021
Communication in History: The Key to Understanding

History Day is a competition that encourages middle and high school students to develop creative, original historical research based around an annual theme.



Mississippi Historical Society



Welcome. The Mississippi Historical Society publishes this website to encourage interest in Mississippi history.

Teachers: Look for links to lesson plans at the bottom of each feature.



Find an essay on your area of interest – [browse the site's archives](#). Enjoy.

WELCOME to *Mississippi History Now*, the award-winning electronic publication that offers a wide variety of essays on the history of Mississippi, covering the periods from prehistory through the 20th century. Launched in 2000, *Mississippi History Now* has appeal for the history lover, the student, and for the general reader with a lively curiosity. History teachers will welcome the lesson plans that accompany each essay.

THIS ISSUE'S FEATURE



**Building the Collective “voice of Negro women in Mississippi”:
The National Council of Negro Women in Mississippi in the
1960s and 1970s**

by Rebecca Tuuri

Professional Development

- ▶ Workshops
- ▶ Networking Events
- ▶ Educator Email
- ▶ Past Presentations



Digital Archives



Historical Images For Your Class

With thousands of historical photographs and documents now available online, the MDAH Digital Archives is a treasure trove for the classroom. Learn how to quickly search this powerful resource using our Learning Lagniappes: two-page guides to many digital collections, ranging from the 1927 Flood to the Thomas Foner Freedom Summer Papers.

[View All Learning Lagniappes](#)

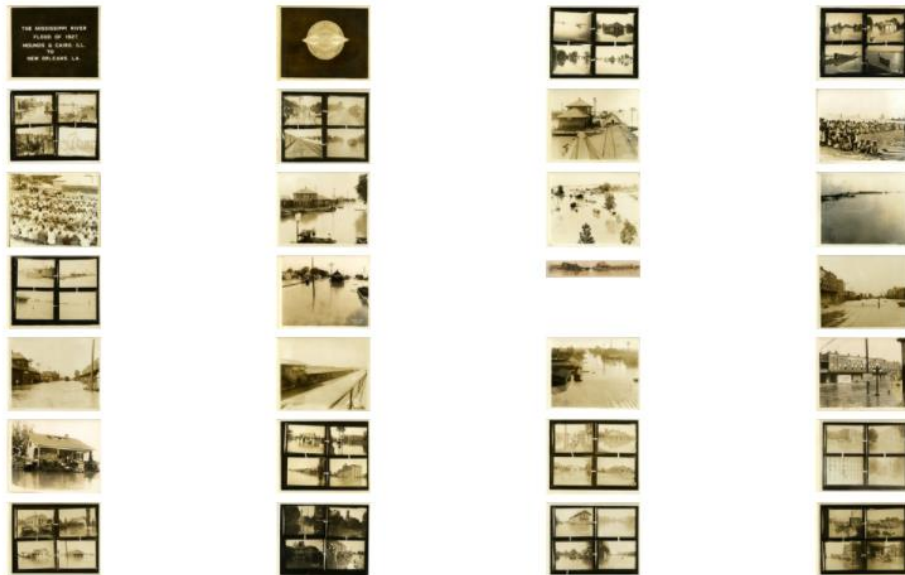
1927 Flood Photograph Collection PI/1992.0002

The Mississippi River flood of 1927 inundated roughly 27,000 square miles of land and displaced some 700,000 persons. Property damage was estimated at \$400 million, and 246 people died in the flood waters. Particularly hard hit by the disaster was the Mississippi Delta region. The 124 photographs in this collection were taken by the flood committee of the Illinois Central Railroad Company in April, May, and October of 1927. Arranged geographically, north to south, the images document flood damage along the route of the Illinois Central Railroad from Memphis, Tennessee, to Delhi, Louisiana. The collection also includes one map of the Illinois Central Railroad throughout the flooded area.

[Collection Description](#) [General & Tech Data](#) [Catalog Record](#)

1927flood

Search 1927flood



« Previous Next »

"The Mississippi River Flood of 1927. Mounds and Cairo, Ill. to New Orleans, LA." Photo of album title page.

[Collection Description](#) [General & Tech Data](#) [Catalog Record](#)

1927flood > 78033_photo

Search 1927flood



1 of 125 Next »

Details

Item: 1

Creator(s): Illinois Central Railroad Company

Description: "The Mississippi River Flood of 1927. Mounds and Cairo, Ill. to New Orleans, LA." Photo of album title page.

Date: 1927

Catalog: [Catalog Record](#)

Filename: 78033_photo.tif

Learning Lagniappes

Learning Lagniappes



Learning Lagniappe Educator Extras

Use the Learning Lagniappes, two-page guides, to help your students navigate many collections in the MDAH Digital Archives. Topics range from the 1927 Flood to the Thomas Foner Freedom Summer Papers. A complete listing of Lagniappes is available below.

1927 Flood Photograph Collection

- Teacher
- Student

Speak Now: Memories of the Civil Rights Era

- Teacher
- Student

The Thomas Foner Freedom Summer Papers

- Teacher
- Student

World War I Statement of Service Cards and Indices (Mississippi)

- Teacher
- Student

Mississippi State Department of Health Photograph Album

- Teacher
- Student

THE 1927 FLOOD PHOTOGRAPH COLLECTION

PI/1992.0002

<http://da.mdah.ms.gov/series/1927flood>

The Great Mississippi Flood of 1927 inundated roughly 27,000 square miles of land and displaced some 700,000 persons. Property damage was estimated at \$400 million, and 246 people died in the flood waters. Particularly hard hit by the disaster was the Mississippi Delta region. The 124 photographs in this collection were taken by the flood committee of the Illinois Central Railroad Company in April, May, and October of 1927. Arranged geographically, north to south, the images document flood damage along the route of the Illinois Central Railroad from Memphis, Tennessee, to Delhi, Louisiana. The collection also includes one map of the Illinois Central Railroad throughout the flooded area.

Note: This activity can be done as a full class discussion or as individual student work. A fillable PDF student version is provided at <https://www.mdah.ms.gov/learning-lagniappes>.

Subjects that can be addressed within this Digital Archive:

- The Great Mississippi Flood of 1927
- Railroads and transportation
- Flood control and levee construction
- Race relations in early twentieth-century Mississippi
- Emergency planning
- The 1928 Flood Control Act

Curricular Connections:

Below are key standards featured in this Learning Lagniappe.

Mississippi Studies

- MS.1.6: Assess the political, economic, and social effects of geographic processes (Great Flood of 1927, Hurricanes Camille, and Katrina) on technological and economic development in Mississippi.

Introduction to Geography

- ITG.11: Illustrate how human systems develop in response to physical environment conditions.

Advanced World Geography

- AWG.5.5: Assess the conditions which produce refugees, asylum seekers, and internally displaced persons and the processes countries utilize to meet their needs.
- AWG.7.4: Examine the role of technologies including communications, transportation, and infrastructure in the emergence of global economic interdependence.
- AWG.11.1: Explain how characteristics of the physical environment can both hinder and advance development.

TEACHER EDITION

Directions: Use items from the MDAH Digital Archive entitled 1927 Flood Photograph Collection found at <http://da.mdah.ms.gov/series/1927flood> and <https://mississippiencyclopedia.org/entries/mississippi-river-flood-1927/> to analyze and interpret the following items.

Note: Navigate to items by going to <http://da.mdah.ms.gov/series/1927flood>, clicking on the first picture, and then entering the desired item number in the box below the image.

Questions:

1. Navigate to Item 8. This is a photo of flood refugees standing in line at Birdsong Camp. Why are these refugees standing in line?

2. Navigate to Item 21. This is a photo of two males standing on the porch of houses surrounded by flood water. Some people chose not to evacuate and some were unable to evacuate the flood zone. What would you have to do to flood-proof your house and prepare your family to wait out the flood?

3. Navigate to Item 50. This is a photo of flood water surrounding the depot at Egremont railroad station. Why would railroad tracks make a good place to escape flood waters? Who and what are using the tracks in this image?

4. Navigate to Item 61. This May 2, 1927, photo of a flood area at a levee in Vicksburg shows the levee with two very different water levels on either side. What does this tell you about the status of flood waters two weeks after the levees broke?

STUDENT EDITION

Break Out Session

- ▶ Designate a note taker
- ▶ Your slide corresponds to your breakout room number
- ▶ Your lagniappe will be listed on the top of your slide
- ▶ Use link on the top to get to the lagniappes
- ▶ Answer the four questions on the slide



Share **your** thoughts

Leave your comments in the chat box:

- ▶ A way to use lagniappes in your classroom
- ▶ Another way to use the Digital Archives in your classroom
- ▶ Another collection you'd like to see as a lagniappe
- ▶ Other feedback



www.mdah.ms.gov

Facebook: @mississippihistoryday

Instagram: @mdah_official

YouTube: www.youtube.com/user/MDAHVideo

Twitter: @mdah_official

Email: OutreachPrograms@mdah.ms.gov

Phone: 601-576-6997