



Shalom, Y'all!

Teaching Mississippi's Jewish History

Nora Katz

Institute of Southern Jewish Life

On today's agenda...

- Mississippi Jewish history on one foot
- Matzoh Ball Gumbo
Introducing the southern Jewish experience
- Teaching Jewish immigration history
Exploring Jewish artifacts as primary sources
- Debrief and discussion

BH

YOU ARE ON



CHOCTAW AND
NATCHEZ

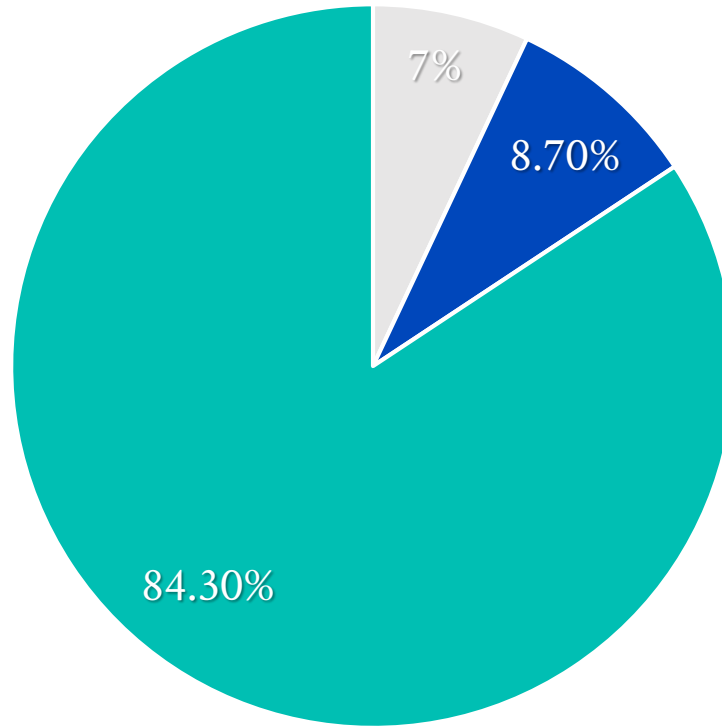
LAND



USDAC.us/nativeland
#HonorNativeLand

Artwork by Keith BraveHeart
Oceti Sakowin: Oglala Lakota

Distribution of U.S. Jewish Population



■ Non-Florida South ■ Florida ■ Non-South

Who is a Jew?

Religion

~~Nation~~

~~“Race”~~

Ethnicity

Culture

Some of the above.

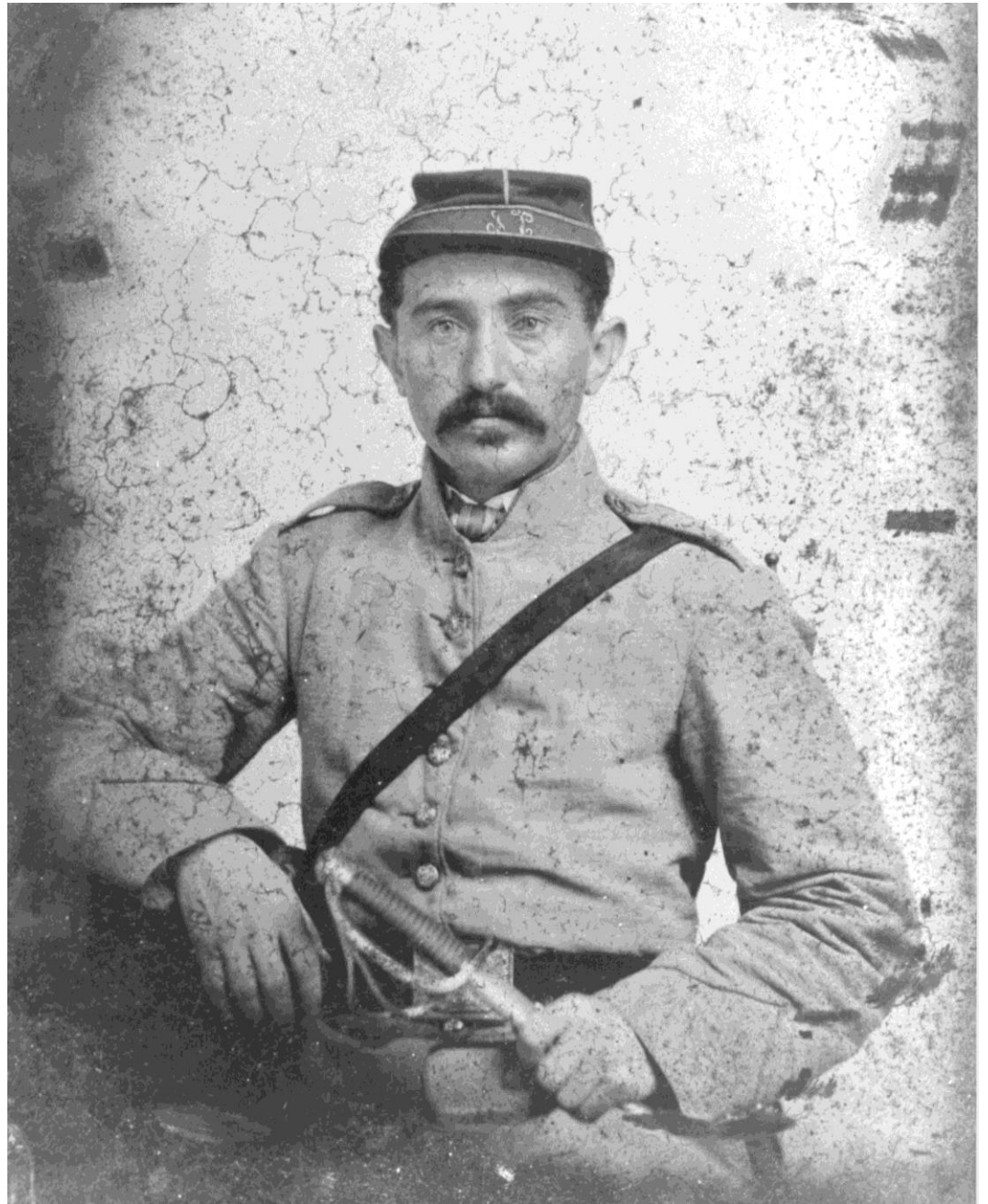


Kahal Kadosh
Beth Elohim
Charleston,
South Carolina
(c. 1800)



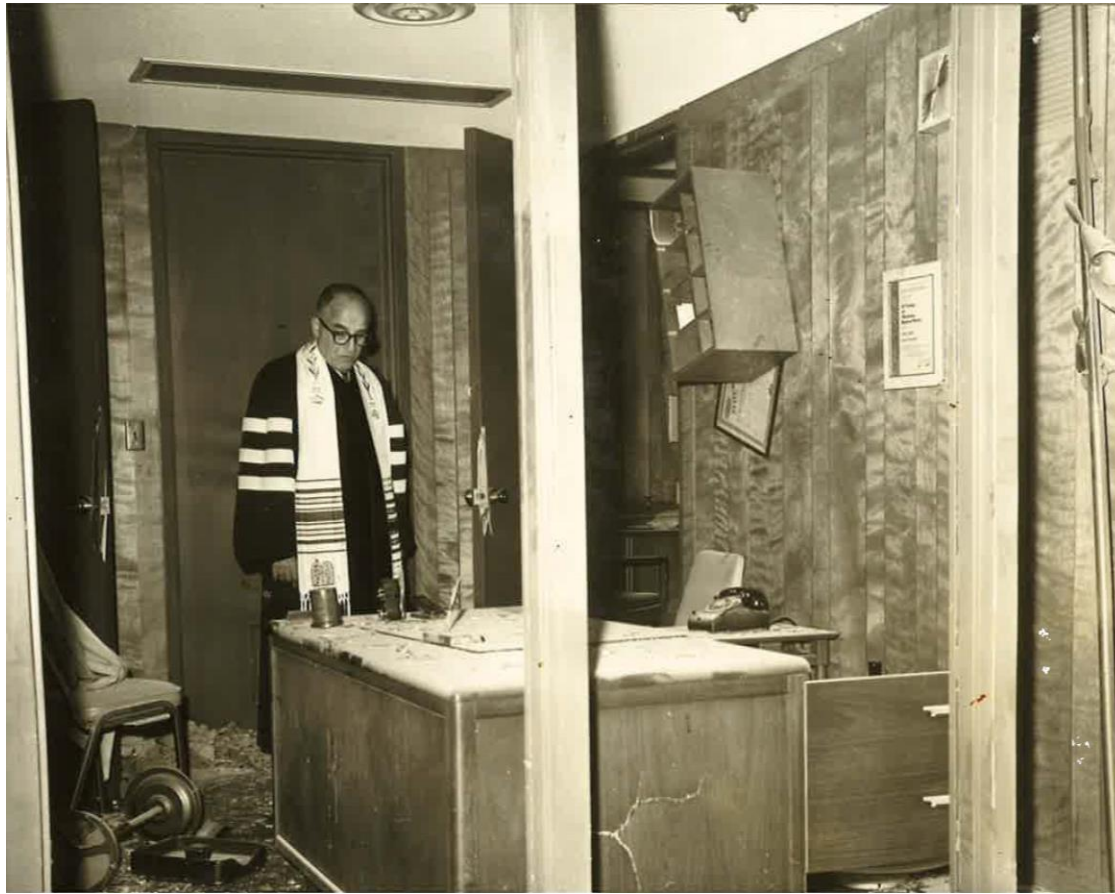
Isaac Wolfe Bernheim
came to Kentucky from
Baden in the late 1860s

Confederate Soldier
Leon Fischel

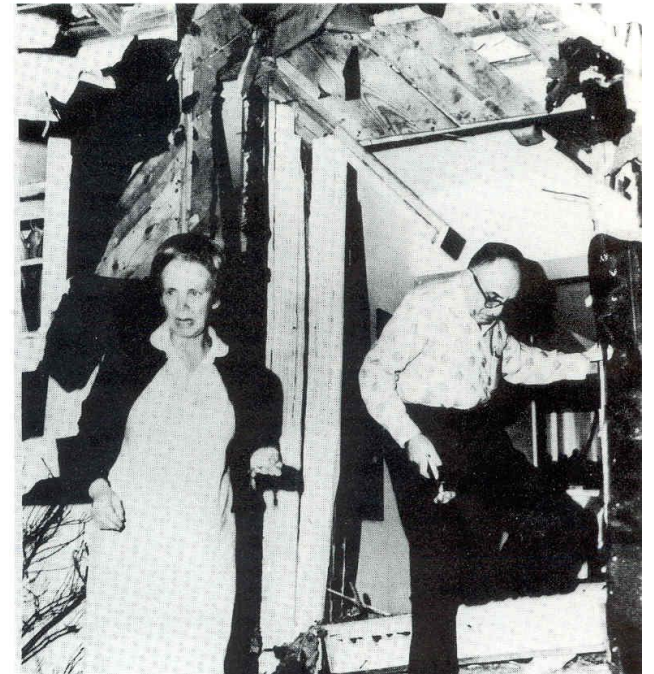




Temple B'nai Israel
Natchez, Mississippi



Left: Rabbi Perry Nussbaum after the bombing of Beth Israel Congregation, Jackson, Mississippi, September 1967



Right: Perry and Arene Nussbaum after the bombing of their home, November 1967



Heather Booth and Fannie Lou Hamer, 1964

Jewish Women's Archive, courtesy of Wallace Roberts



Joe Martin Erber and Meyer Gelman at Congregation Ahavath Rayim in Greenwood, Mississippi, c. 1990s

From *Shalom Y'all*, by Bill Aron and Vicki Reikes Fox



MARCIE COHEN FERRIS

Matzoh Ball Gumbo

CULINARY TALES *of the* JEWISH SOUTH



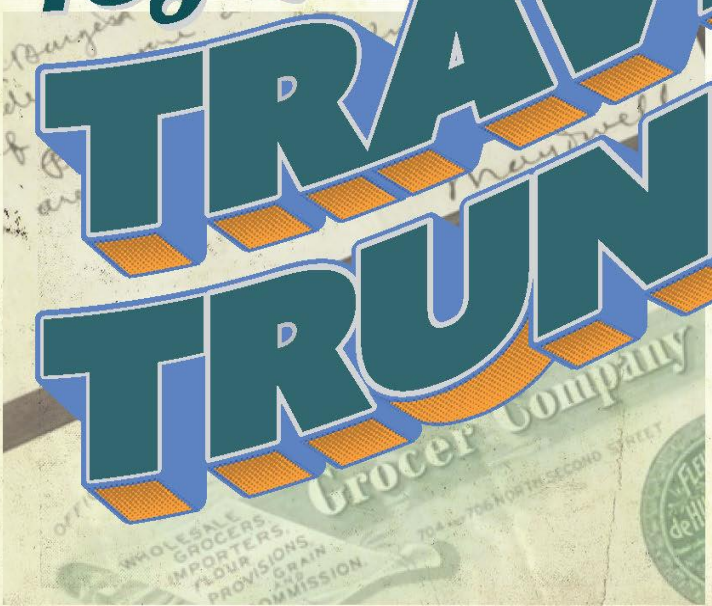
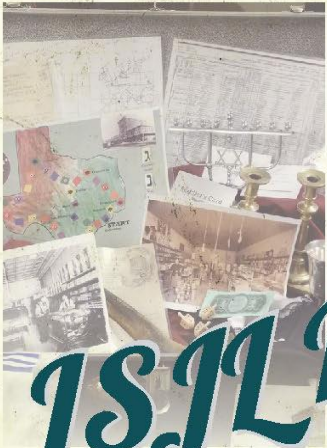
Southern



Jewish

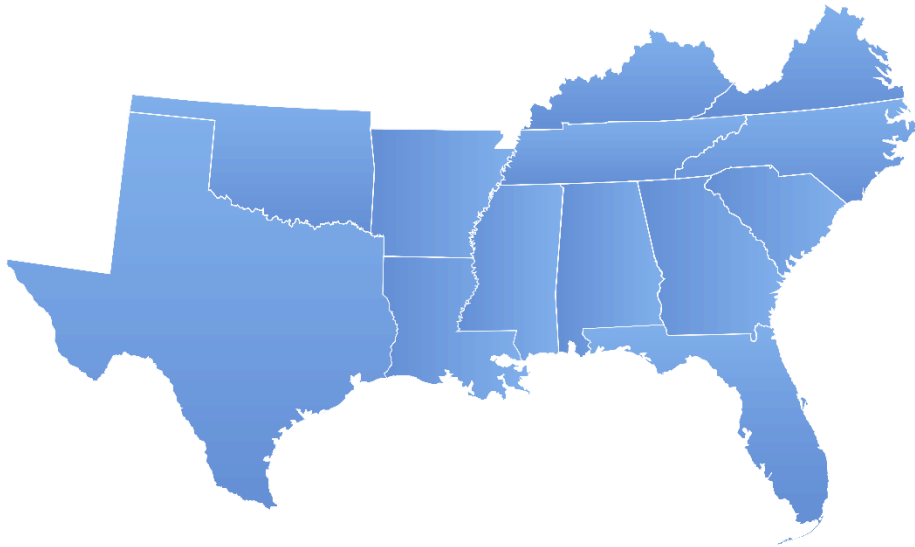
ISJL Immigration

TRAVELLING TRUNK



Hands-on experiences with the past.
New perspectives on southern history.
*Celebrating immigrants' contributions
to the American story.*

Encyclopedia of Southern Jewish Communities



www.isjl.org



Nora Katz

ISJL Director of Heritage and Interpretation

nkatz@isjl.org

Connect with the ISJL!

www.isjl.org

[@TheISJL](https://www.facebook.com/TheISJL)

[facebook.com/TheISJL](https://www.facebook.com/TheISJL)